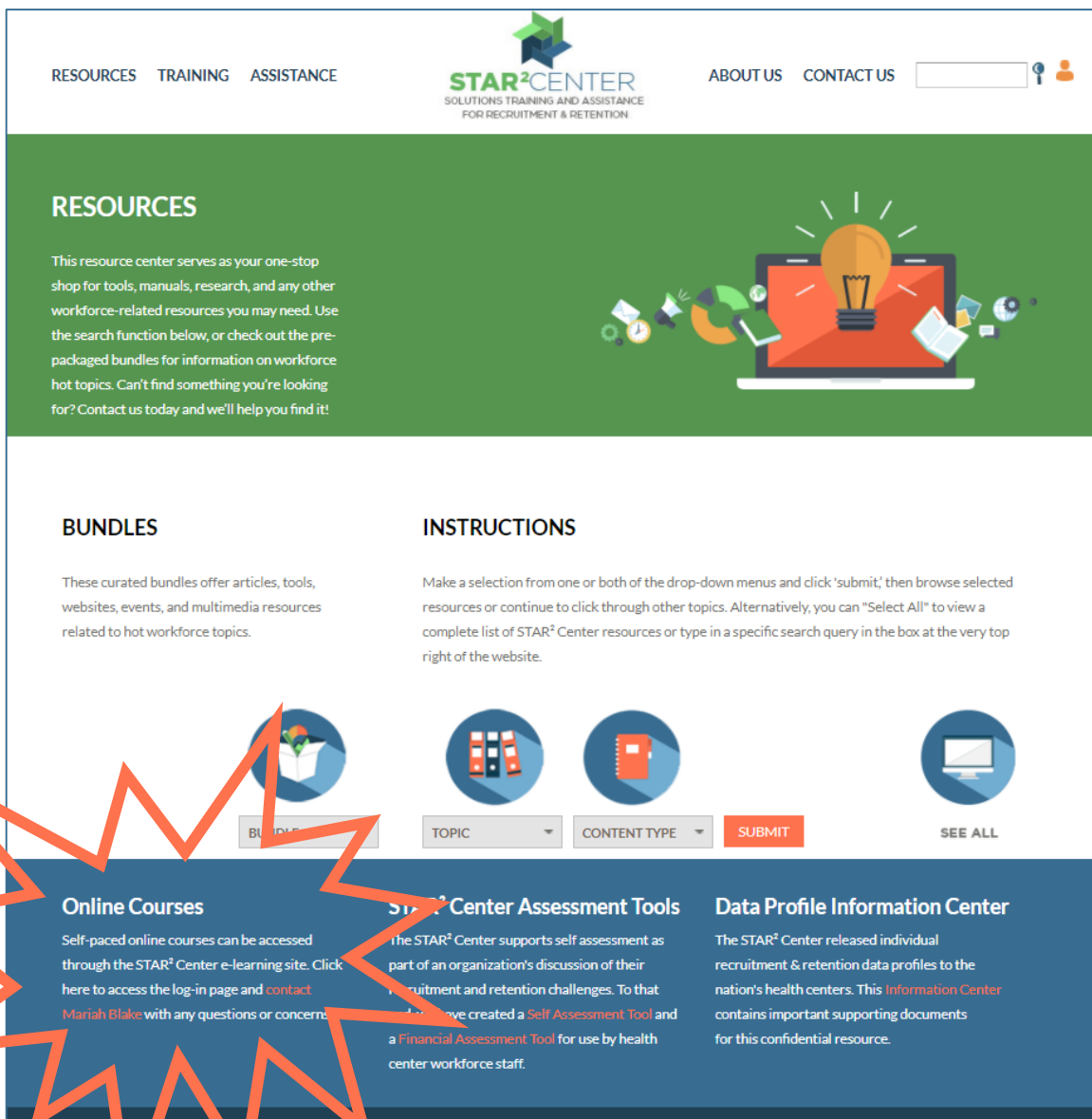


## ACCESSING ONLINE COURSES

Welcome to the STAR<sup>2</sup> Center Online Courses! To access this portion of the website, click the link in the bottom left portion of the Resource Center. If you are enrolled in a Discussion Group, you can also access this page through the Discussion Dashboard.



Upon leaving the STAR<sup>2</sup> Center Resource Center, you will be taken to the log in page for STAR<sup>2</sup> Center Online Courses, hosted by Nimble E-learning. Here, you will be asked to log in or register to create a new account.



STAR<sup>2</sup>CENTER SOLUTIONS TRAINING AND ASSISTANCE FOR RECRUITMENT & RETENTION

acu association of clinicians for the underserved

LOGIN

Email:

Password:

No account? [Click here to register.](#)

Contact your administrator \* [Forgotten your password?](#)

STAR<sup>2</sup>CENTER SOLUTIONS TRAINING AND ASSISTANCE FOR RECRUITMENT & RETENTION

acu association of clinicians for the underserved

New Account

First name \*

Last name \*

Email \*

Password \*   
Password strength: ---

Repeat password \*

Phone Number \*

Organization \*

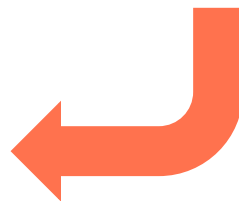
Job Title

HHS Region \*

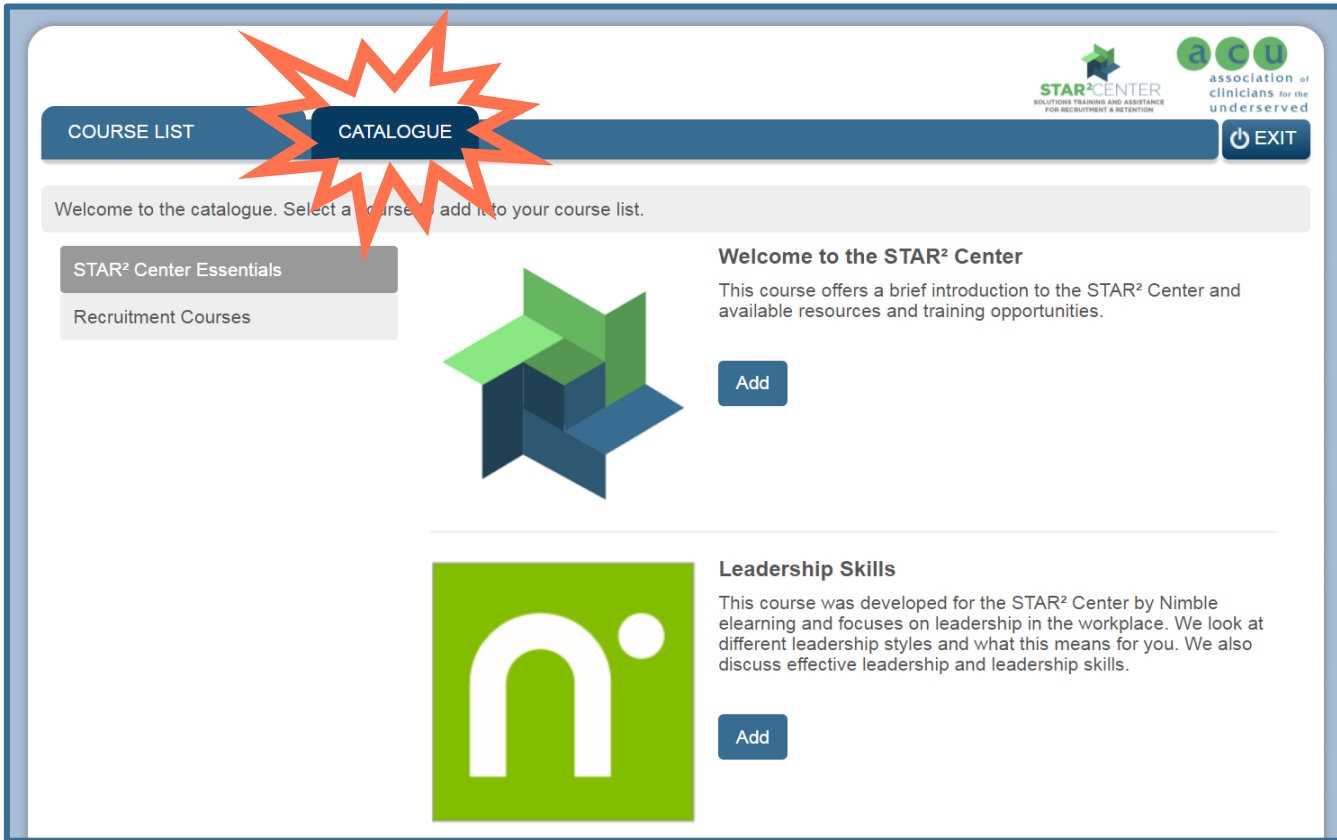
Please select the primary Health & Human Services

Region in which you work.

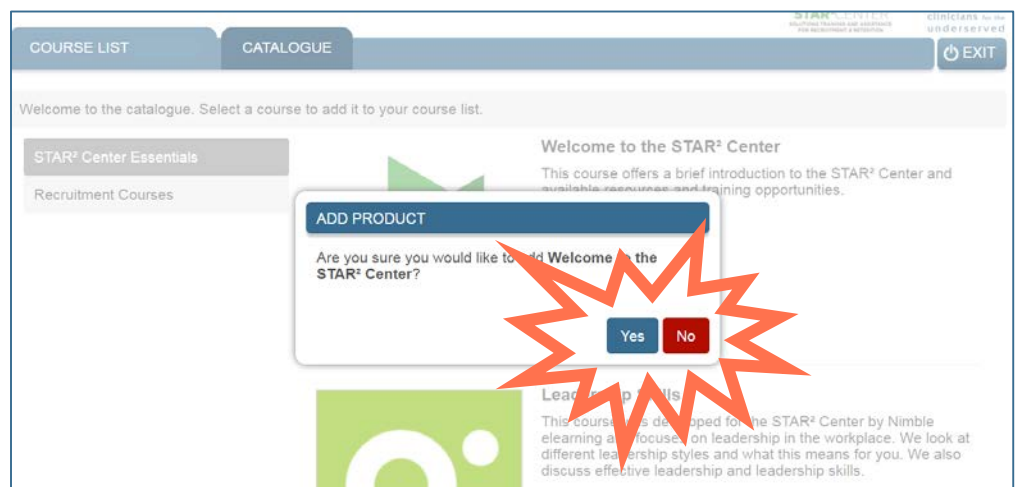
To register as a STAR<sup>2</sup> Center Learner, please tell us a bit about yourself and create a password for your account. After filling out this form and clicking "confirm," you will be able to access the course catalogue.



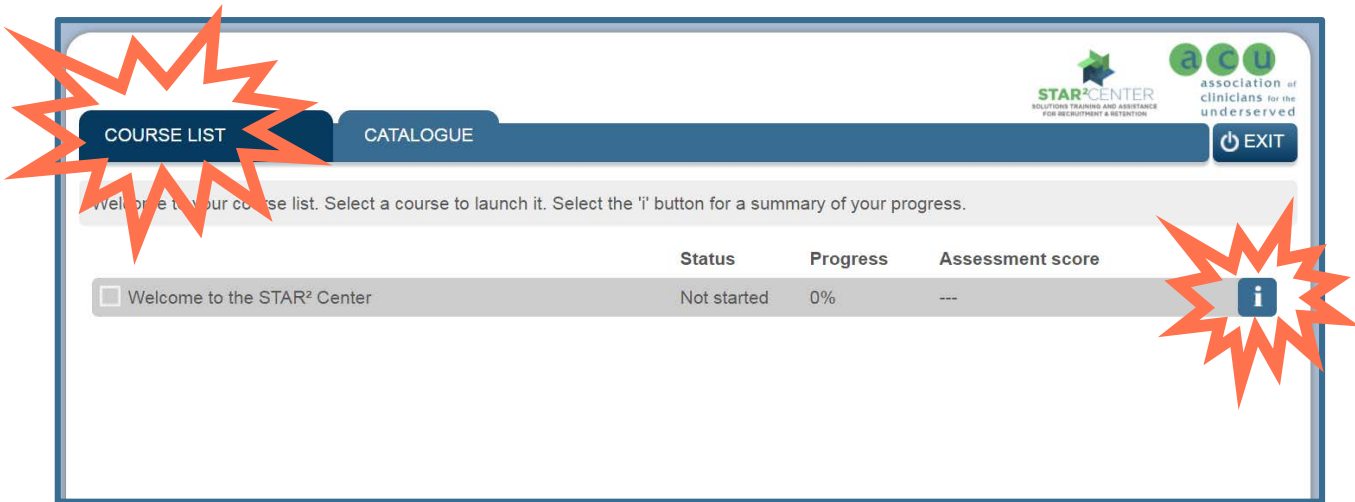
Once you have logged in to the E-Learning Platform, you will enter the Course Catalogue. You can view all courses available for enrollment and a brief summary of each course.



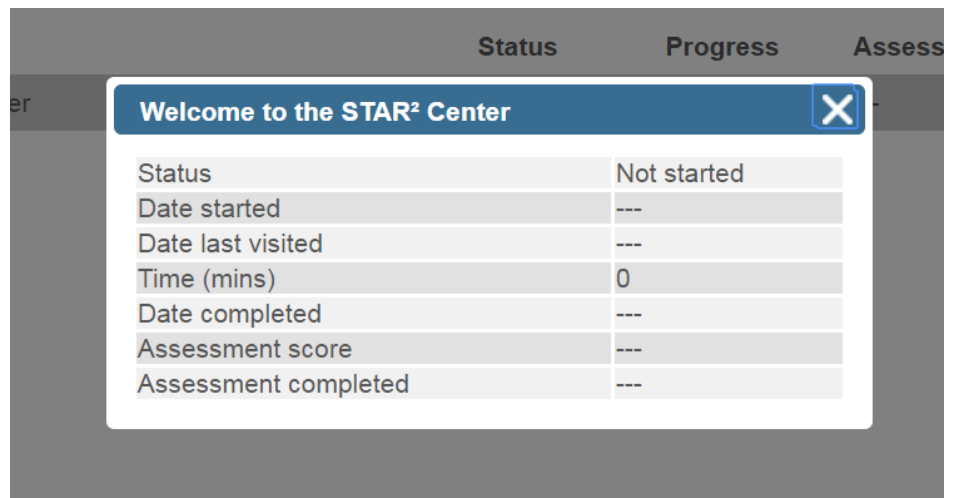
To enroll in a course, click the "Add" button beneath the course description and confirm your choice in the following pop up box.



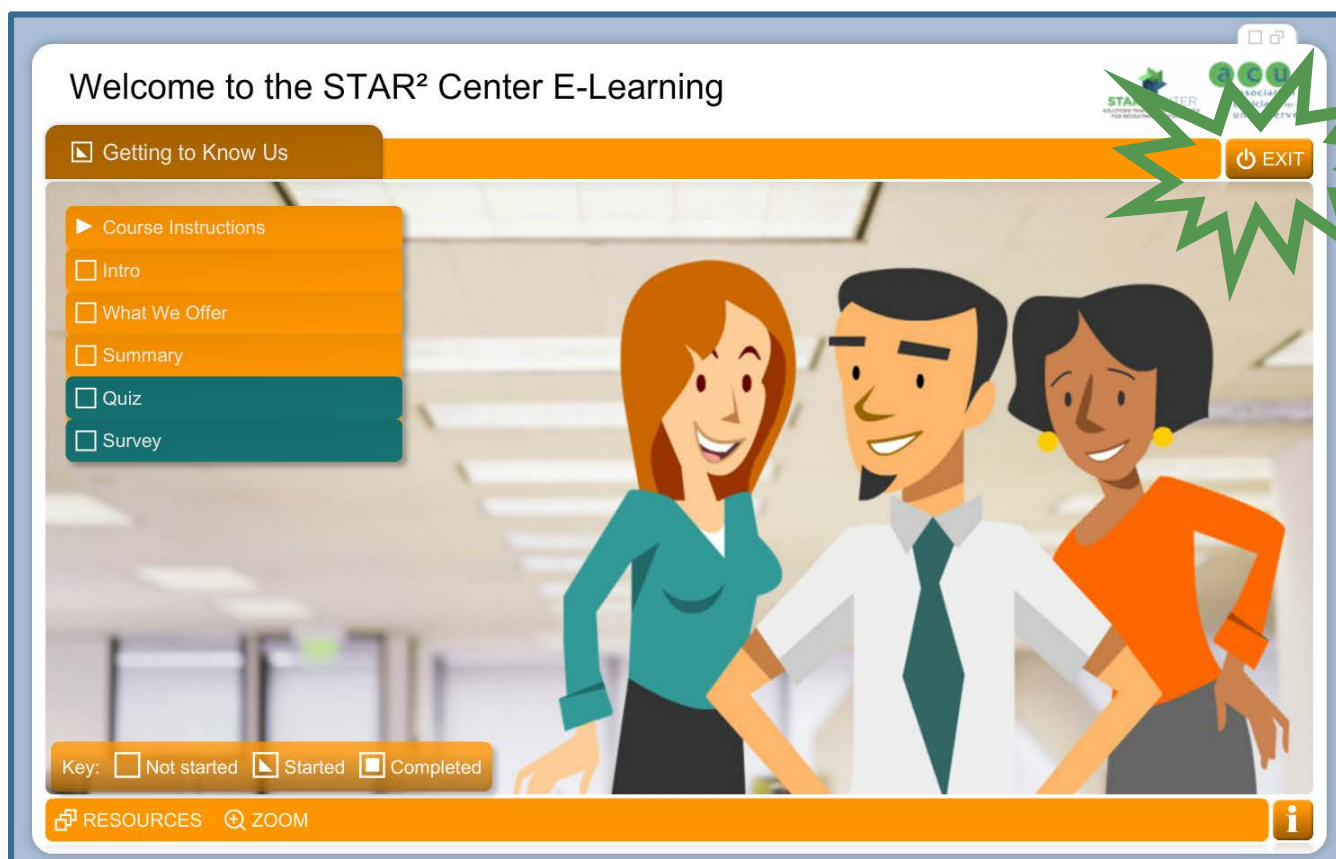
After enrolling in a course you can access your Course List. Each course in which you are enrolled will appear here as well as information on the status of your progression in that course. To enter a course and begin work, click on the course title in your course list.



Clicking the “information” button next to any course will open a pop up box with more detailed information on your course experience.



Welcome to your STAR<sup>2</sup> Center Course! You will see something similar to the image below as the home page for each course you access through your course list. You can progress through the course by clicking through the course instructions and pages in the menu.



From this home page, you can return to the course list by clicking “Exit.” Throughout the course you can return to this page by clicking the “Menu” button in that same location.

As always here at the STAR<sup>2</sup> Center, we hope you have fun working through these courses at your own pace. If you encounter any trouble with your account or courses, [let us know!](#)